

*Report of*  
**Galala WTP**  
*Project*



# (( *Task Description* ))

The following equipment have been installed:

- ⚡ 24 MV cells, type: MCSET4.
- ⚡ 138 LV cells, type: BLOKSET.
- ⚡ 4 batteries 110 V with charger.
- ⚡ 14 PLC panels.
- ⚡ 4 transformers oil 250 KVA - 0.69/0.4 KV.
- ⚡ 1 transformer oil 250 KVA - 22/0.4 KV.



# (( *Task Description* ))

The following equipment have been installed:

- ⚡ 6 transformer oil 6 MVA - 22/0.69 KV.
- ⚡ 2 transformer oil 5 MVA - 22/0.69 KV.
- ⚡ 4 enclosures for transformers 1.5 M.
- ⚡ 4 adaptation flexible copper between TRs and panels.
- ⚡ 12 adaptation copper 6300A between TRs and BW.
- ⚡ 3 adaptation copper 3200A between TRs and BW.

*The work was  
in spaced stations  
in mountainous area.*

*However, the works  
have been completed  
well in record time.*



# Workflow



# Workflow



# Workflow



# Workflow





# Workflow



# Workflow



# Workflow

Schneider  
Electric



# Workflow

Schneider  
Electric



# Workflow



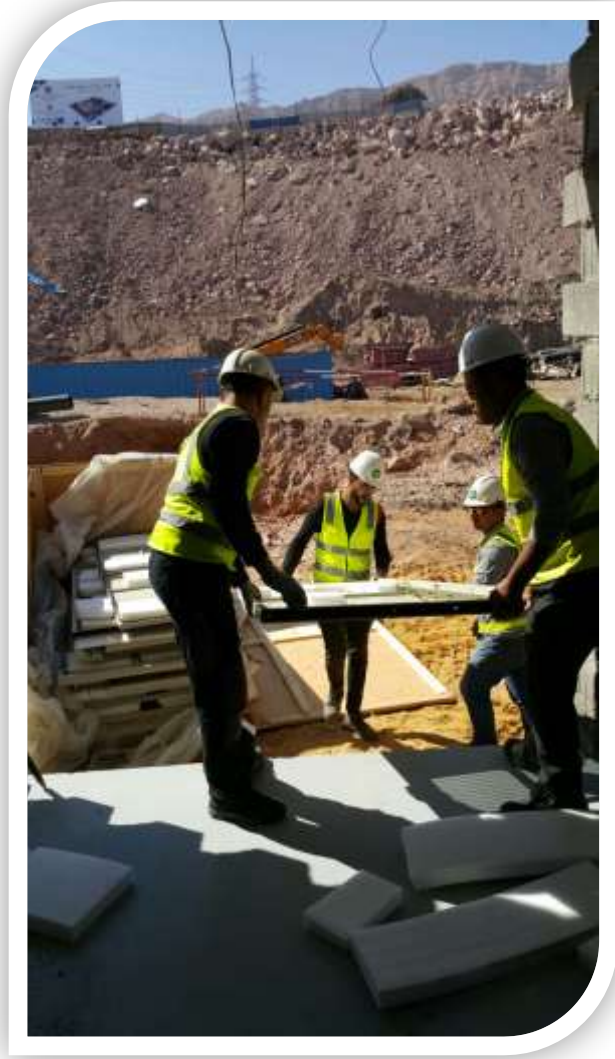
# Workflow



# Workflow



# Workflow





# Workflow



# Workflow



# Workflow



# Workflow

Schneider  
Electric



*Thanks for any one  
supported us  
in this project*



*Meet you  
in new projects*

