

*Report of*  
**IDM**  
*Project*

# **(( *Task Description* ))**

- 1) Installation of Busway 4000A.**
- 2) Installation of RMU panel, type: SM6.**
- 3) Installation of LV-SWGR, type: BLOKSET.**
- 4) Supply & installation of Adaptation copper between TR & BW 4000A.**
- 5) Laying & termination of cables (More than 6000 m).**
- 6) Supply manufactured copper bars.**







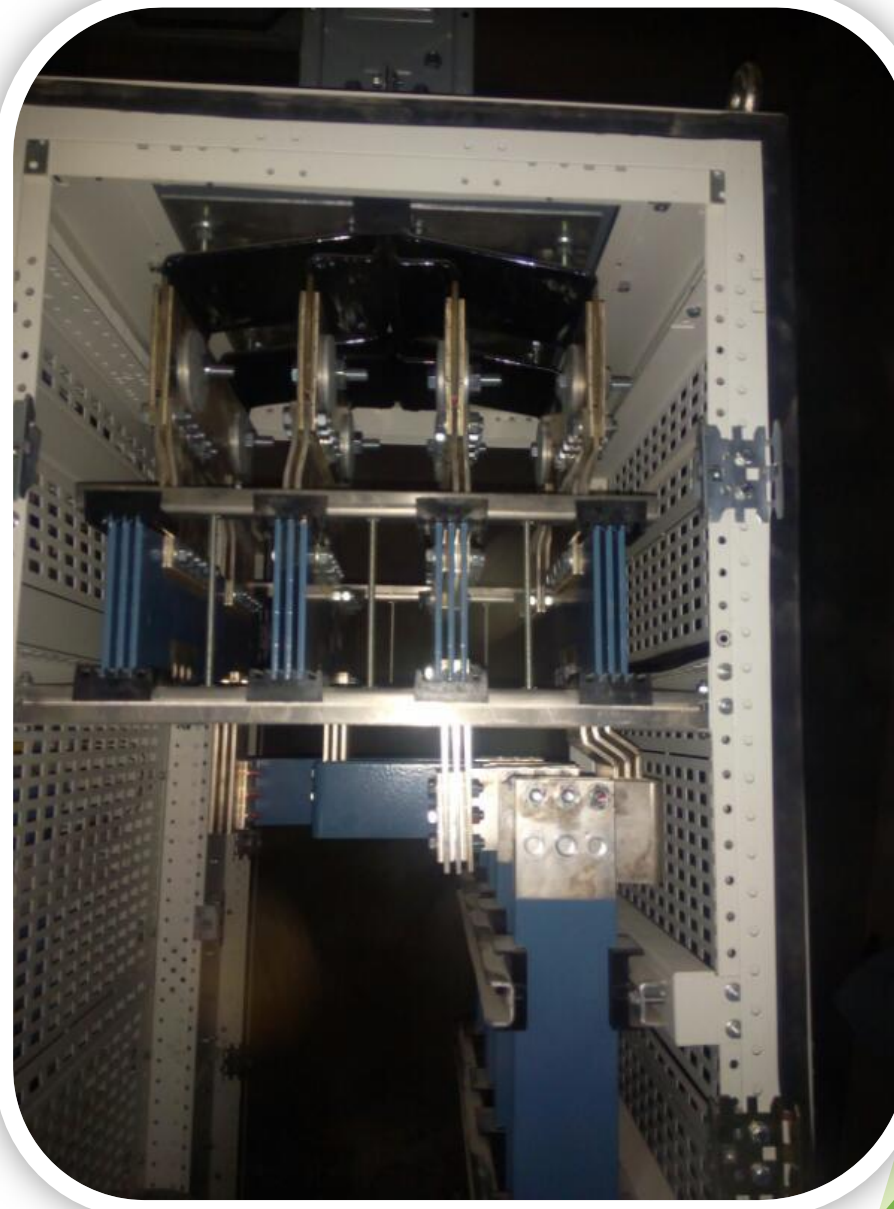
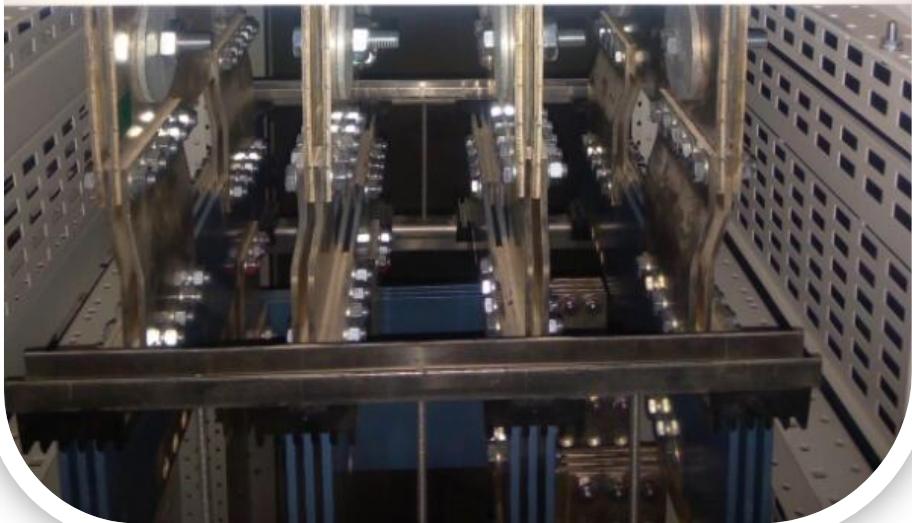


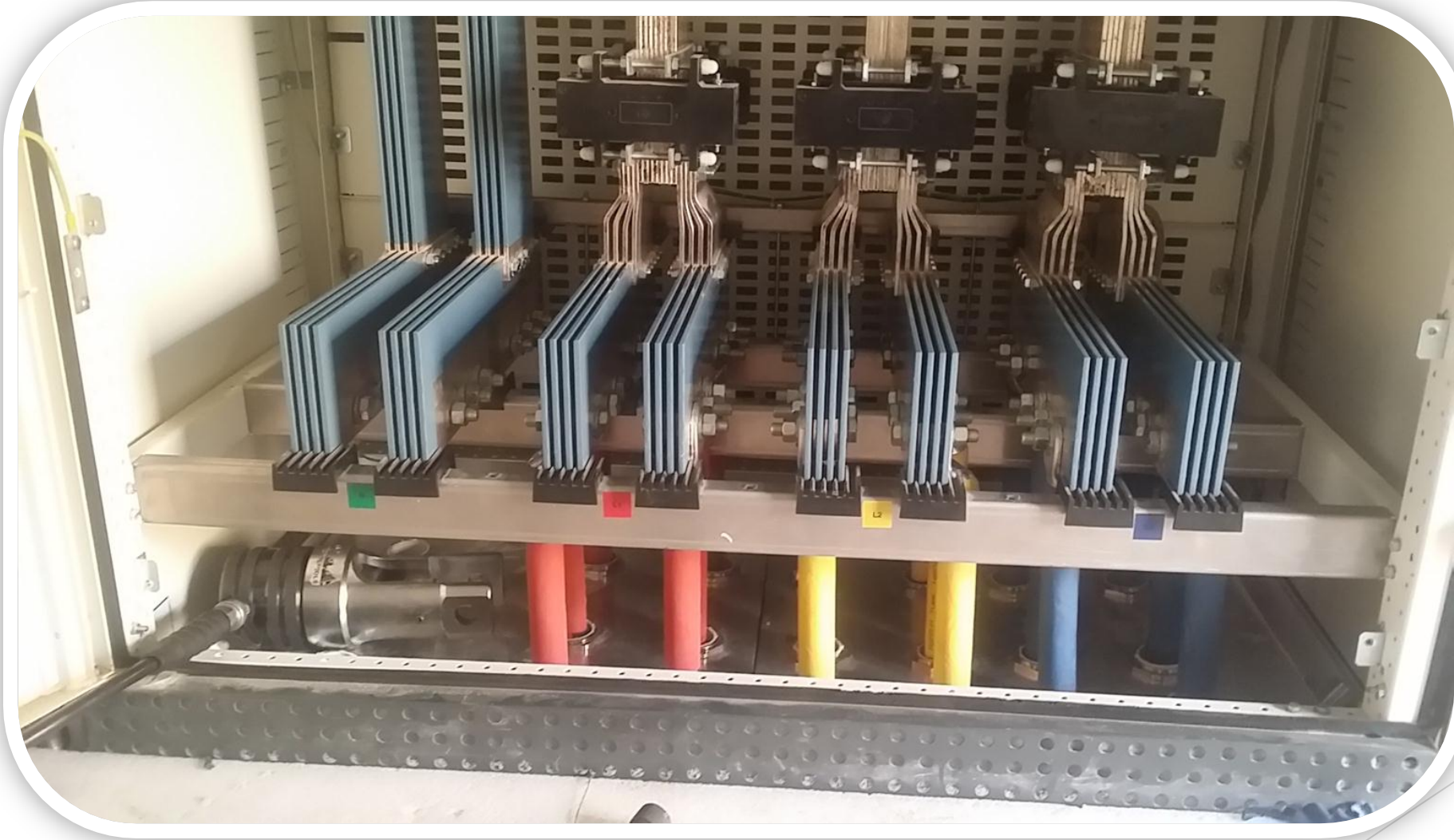


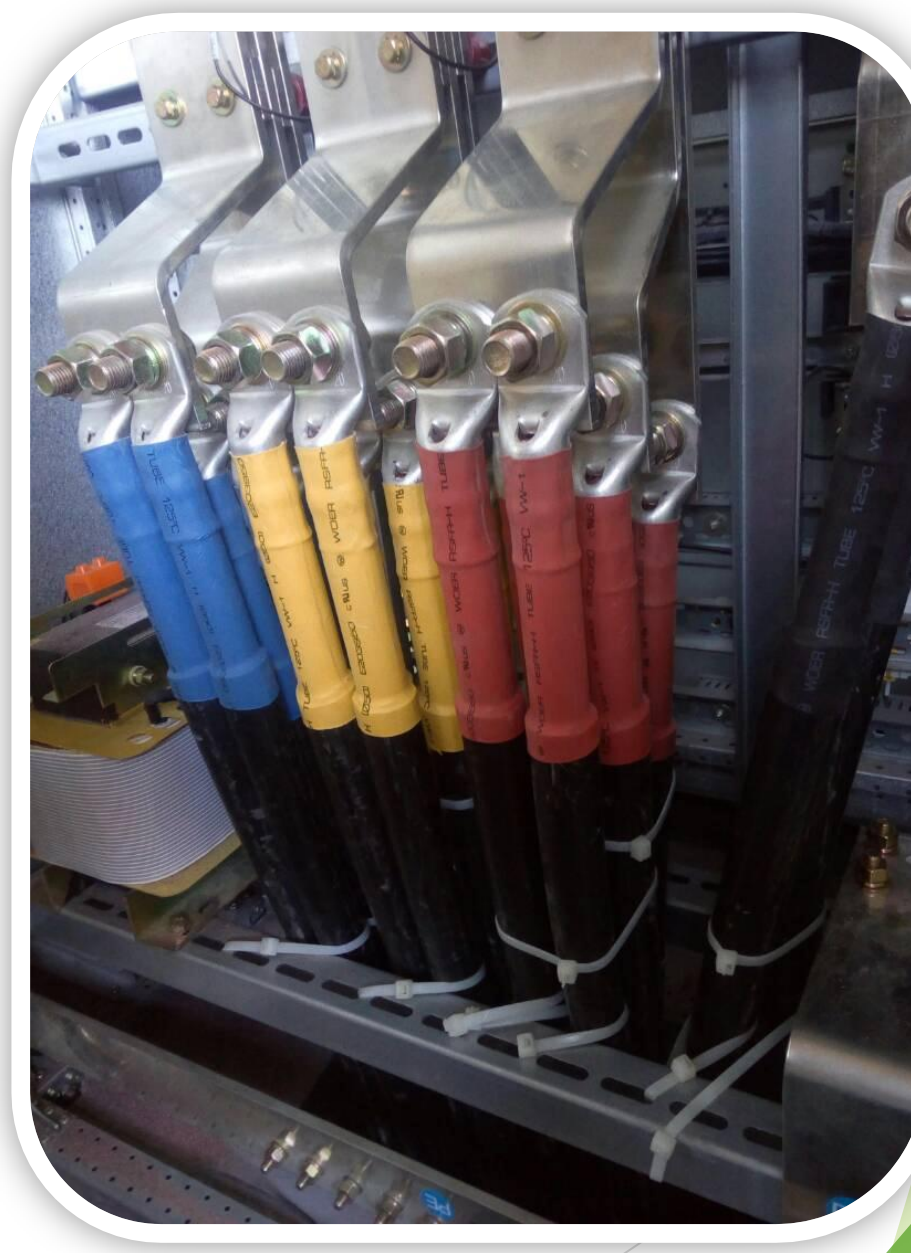


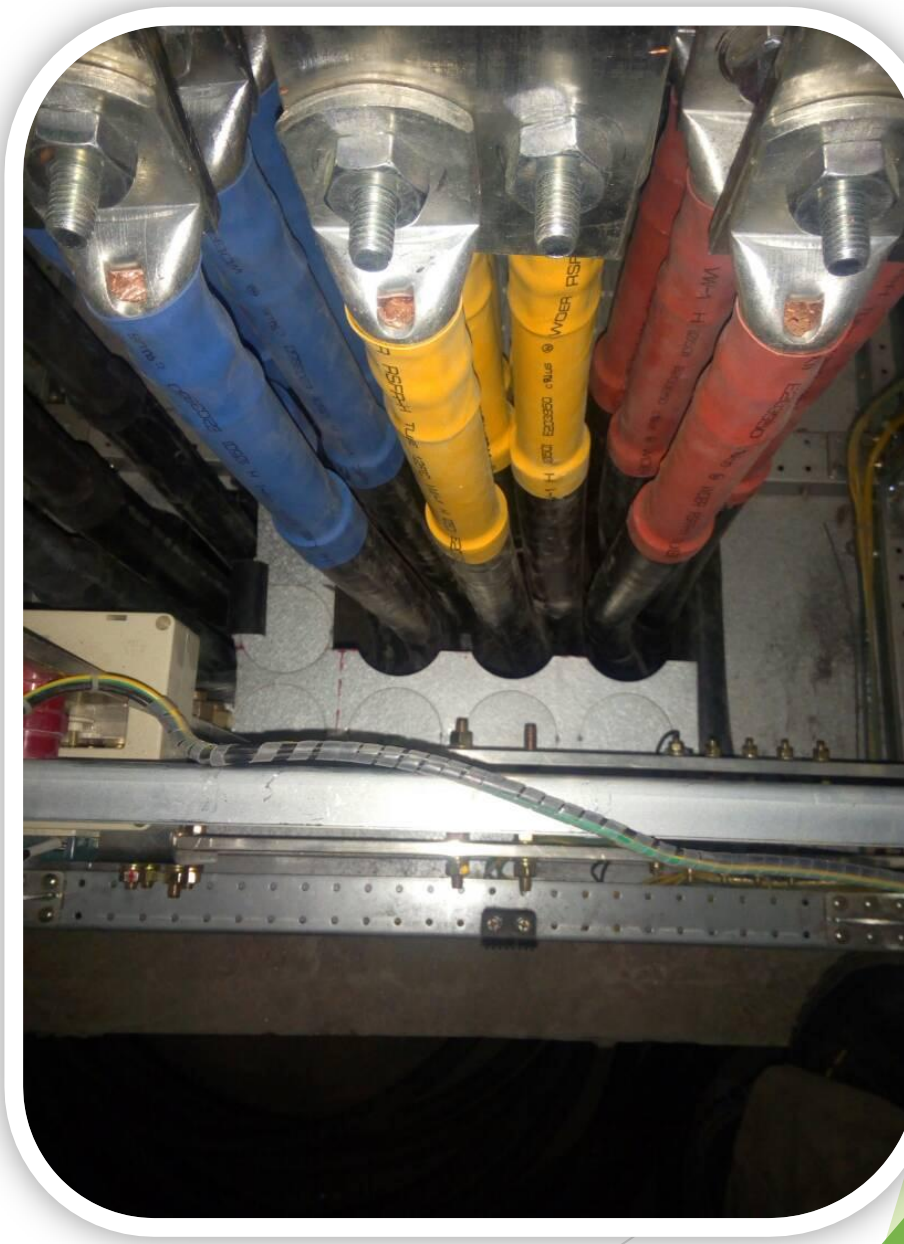
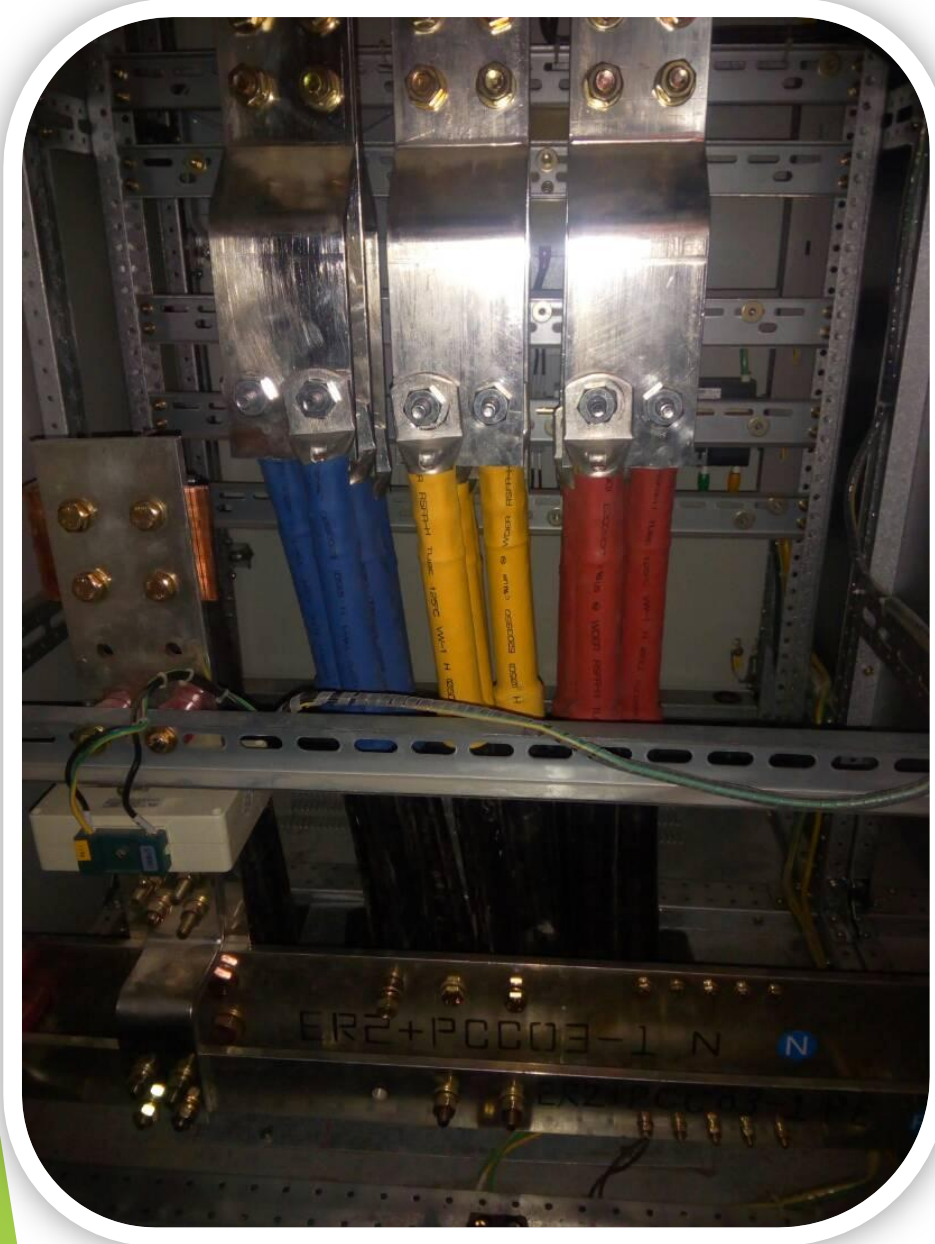




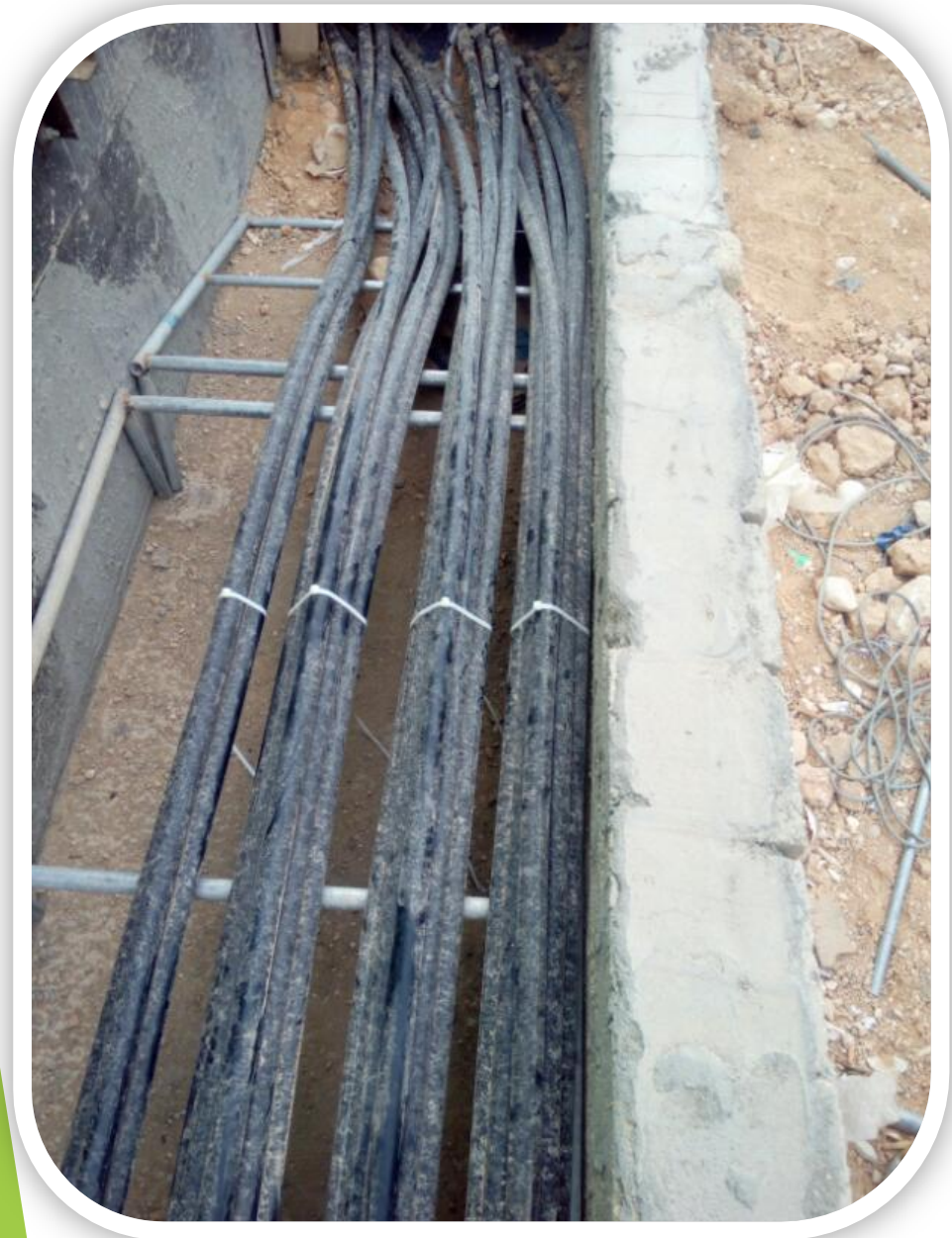
















*Thanks for any one  
supported us  
in this project*



*Meet you  
in new projects*

