

Report of
Roud El-Farag & Abbaseyia
Water Stations project











« Task Description »

*Remove & Installation
of 15 Soft Starter Circuits
(150HP, 200HP, 350HP, 400HP)*



«Introduction»

Because we were very careful to prevent water outage any moment during our work, we have prepared a professional technical study & high accuracy designs.

So, we have manufactured the copper & supports before remove the old circuits.

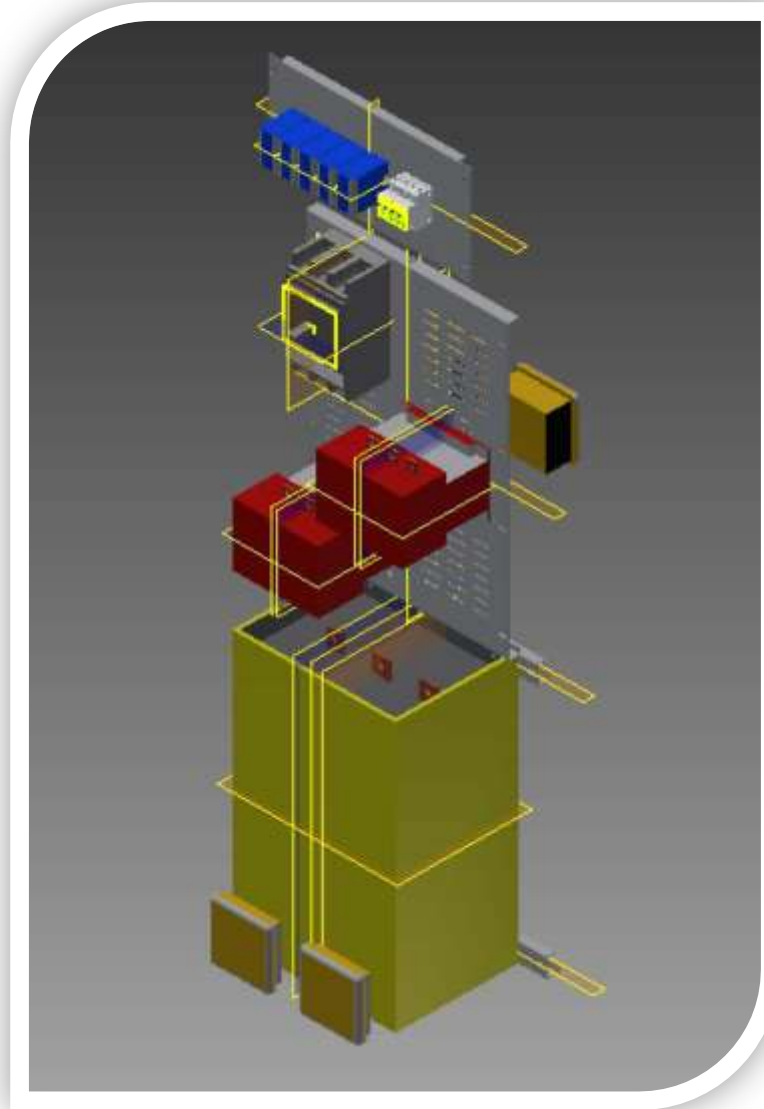
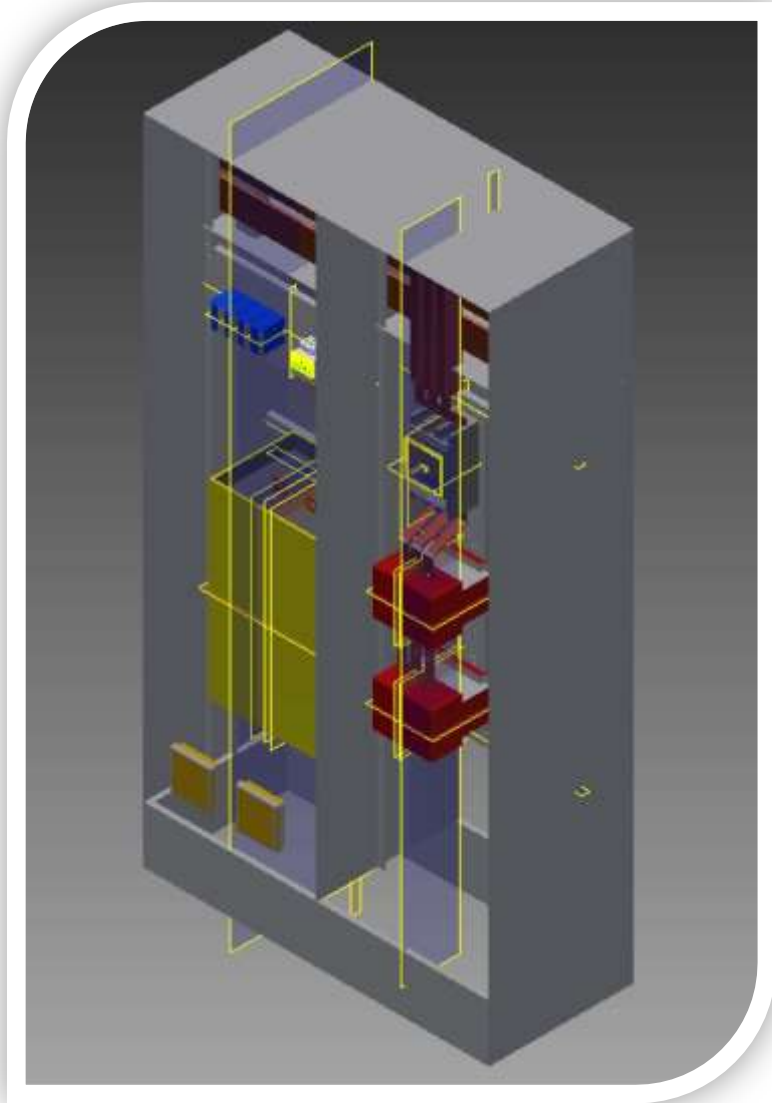
It is worth mentioning that we achieved high level of safety in site with assist of safety manager from Schneider.

*All this led to save time & execute our task on the fullest.
Thus, we succeeded to satisfy the customer.*

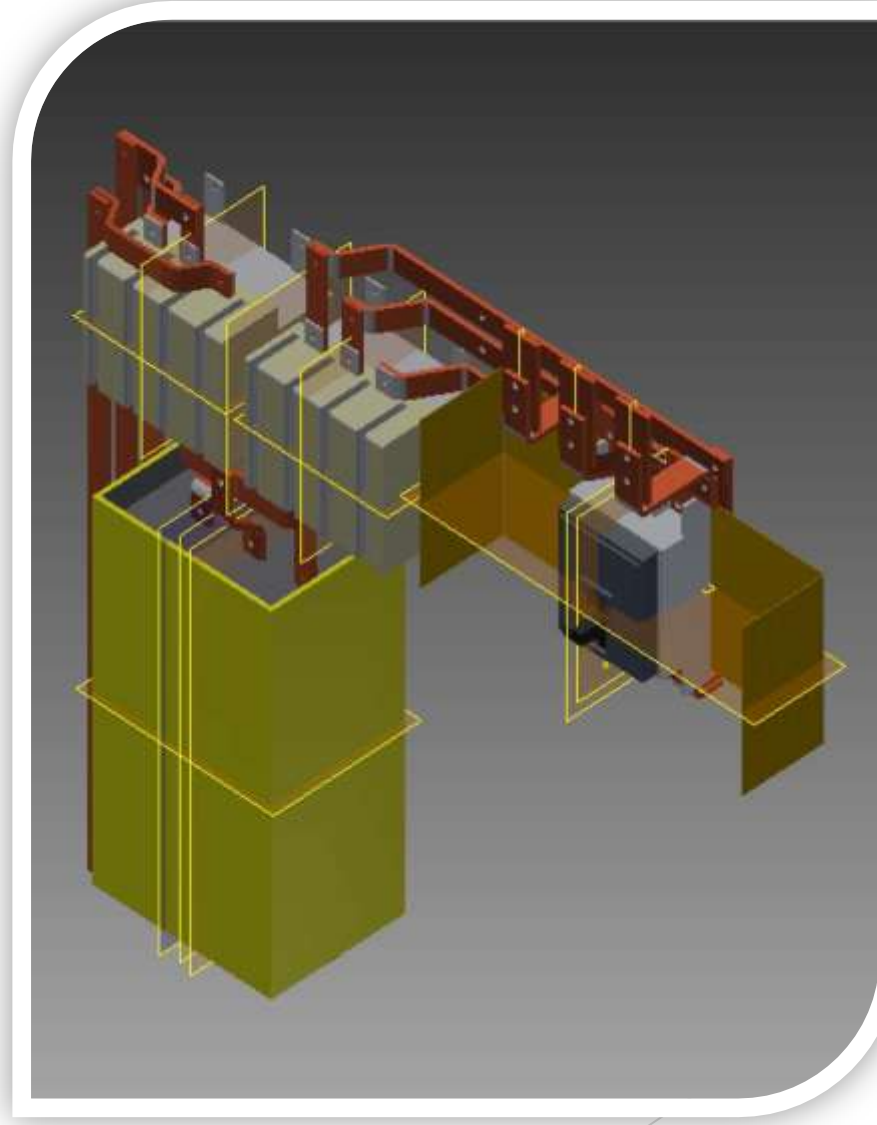
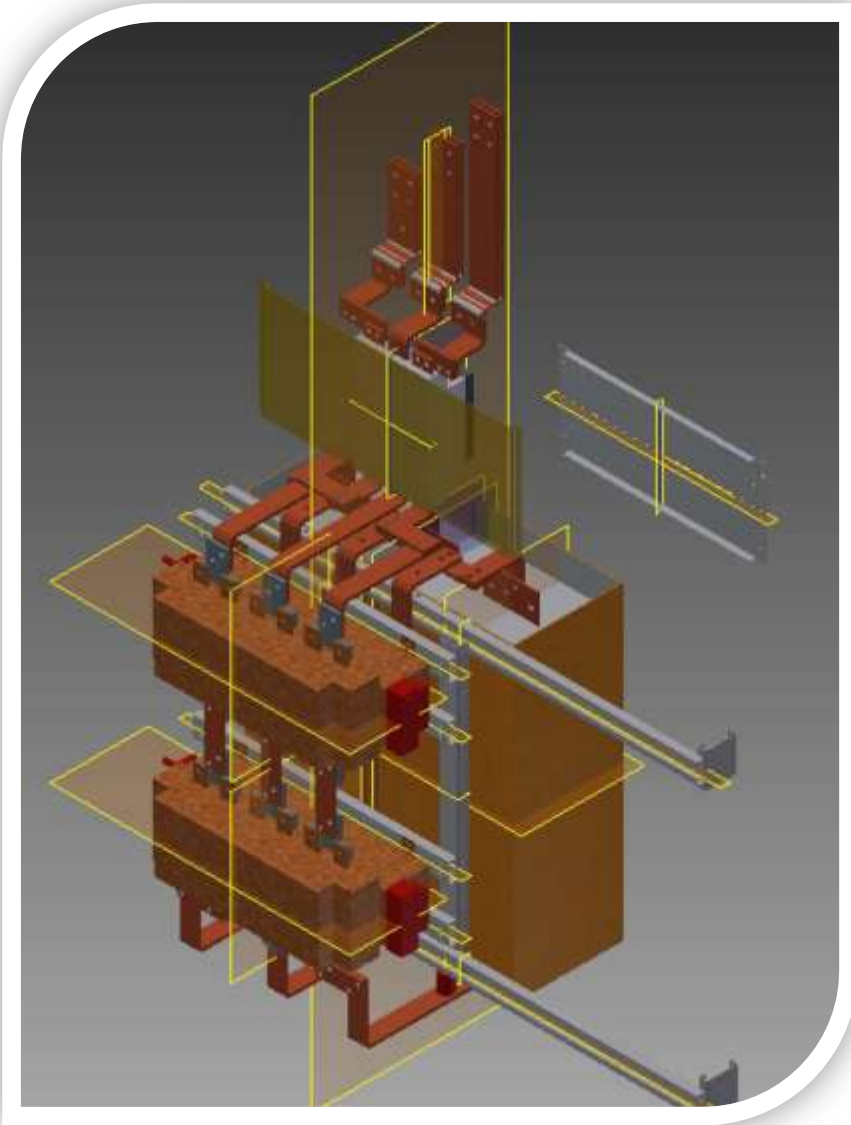
Designs



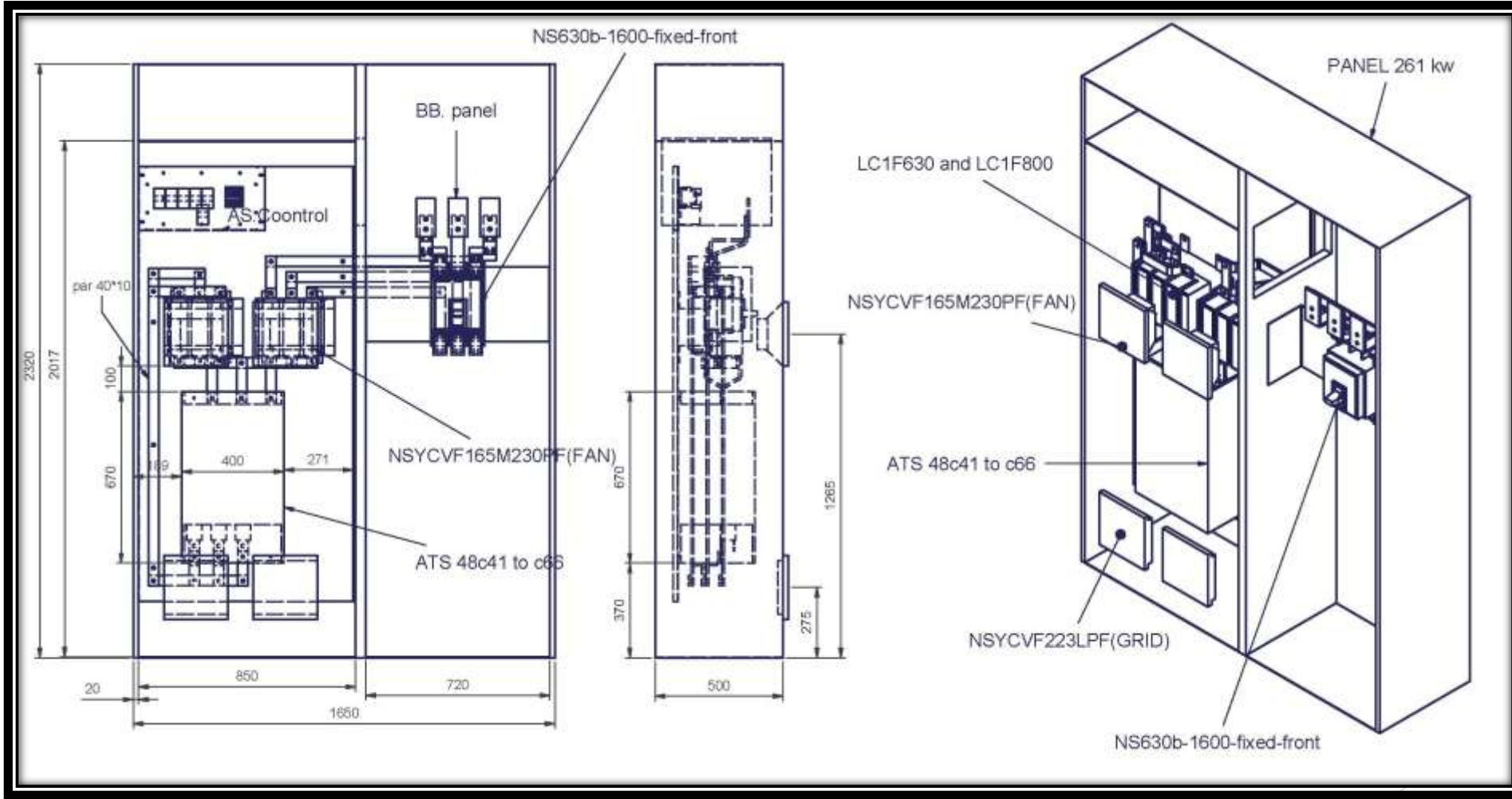
Designs



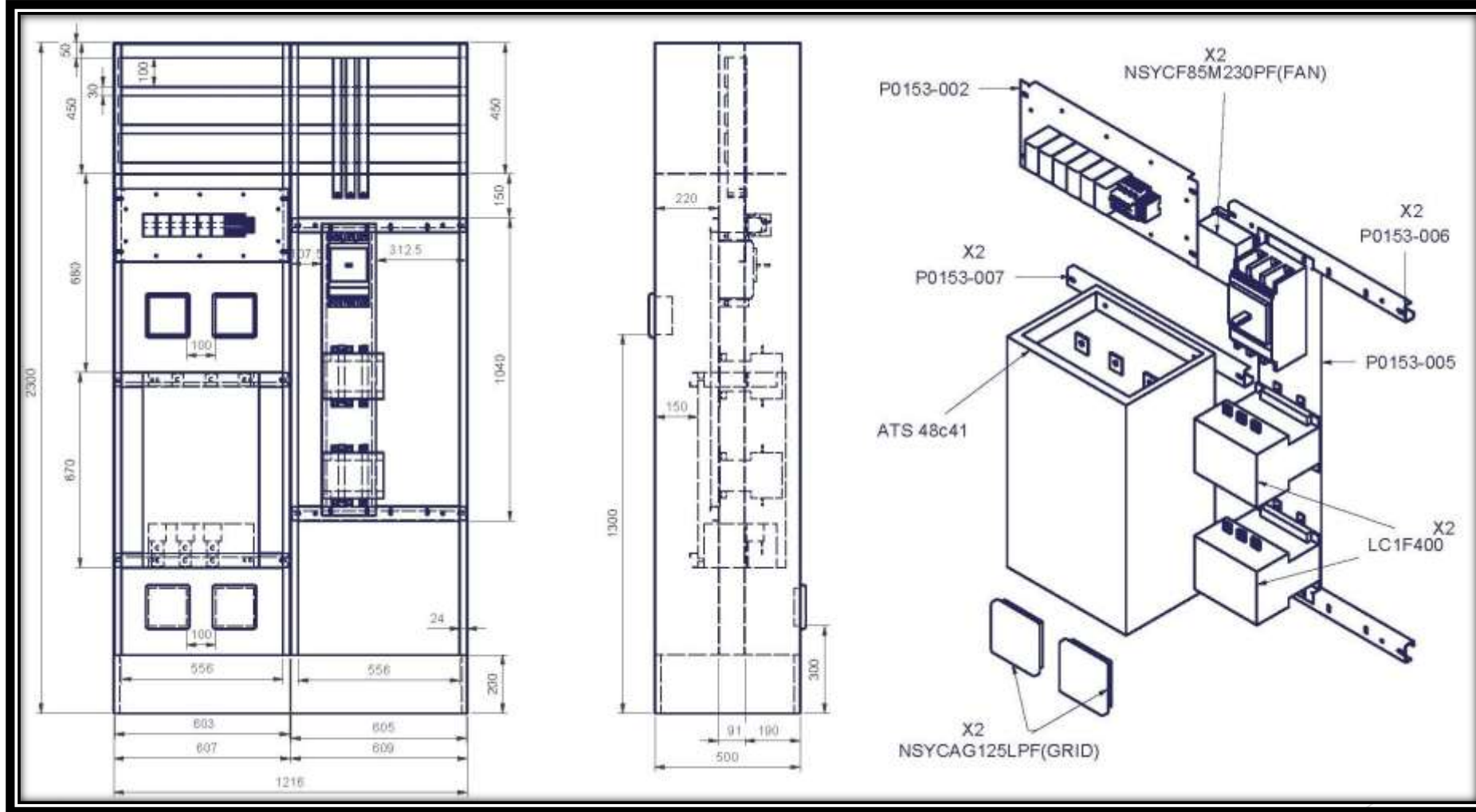
Designs



Designs



Designs



Manufacturing of copper



Manufacturing of copper



Manufacturing of copper



Manufacturing of copper



Before



Before Removal



Before Removal



Before Removal



After



After



Schneider
Electric



After

Schneider
Electric



After

Schneider
Electric



After

Schneider
Electric



After



Schneider
Electric



After

Schneider
Electric



After



Schneider
Electric



After

Schneider
Electric



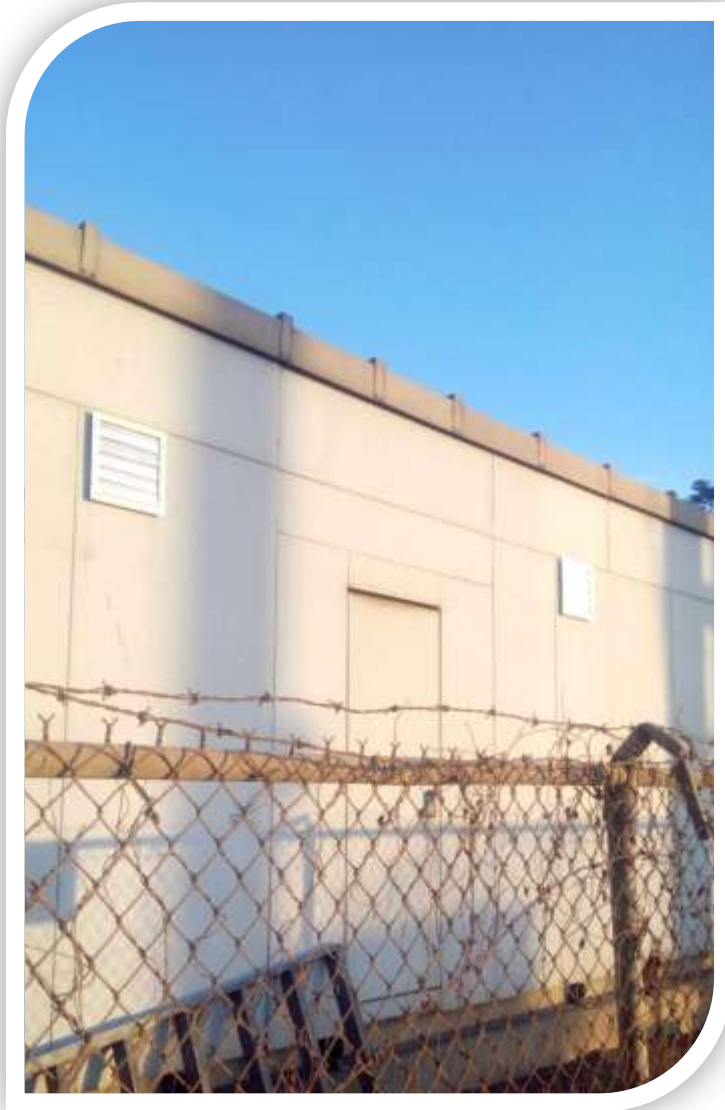
After

Schneider
Electric



*Also, fans have been
installed to improve
ventilation of shelters*

Fans for shelters





*Thanks for any one
supported us
in this project*



*Meet you
in new projects*

